

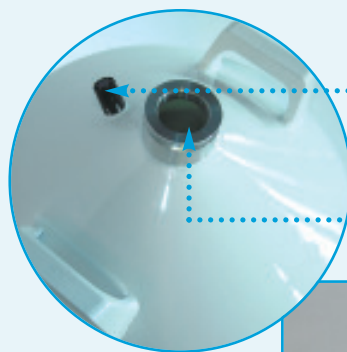
Non-pressurized vessels designed for the storage and transportation of liquid nitrogen



- ▶ Capacity of 7 to 100 litres
- ▶ Static holding time up to 180 days
- ▶ 6 year guarantee on the vacuum



Insulated lid



Vacuum valve

Neck diameter 50 mm

Main characteristics include

Various dispensing systems can be fitted to the TR

- ▶ Tipping handle **C**
- ▶ Tipping stand **E**
- ▶ The DL3 pressurized decanting system **D**

Quality

- ▶ Made out of aluminum and composite materials provides for low consumption and light weight
- ▶ High quality polyurethane paint for long life
- ▶ Standard neck diameter of Ø 50 mm
- ▶ Vacuum valve

Tipping handle **C**





Filling a TR using a TP

Application areas include:
Industrial, laboratories, life sciences,
medical, ...

Gamme TR

		TR7	TR11	TR21	TR26	TR35	TR60	TR100
CHARACTERISTICS								
Liquid capacity	l	7.2	12.2	21.5	26	33.6	60	99
Diameter of neck	mm	50	50	50	50	50	50	50
Static holding time	d ¹⁾	29	42	74	90	125	98	117
Daily evaporation rate	l/d ¹⁾	0.25	0.29	0.29	0.29	0.27	0.61	0.85
Weight empty	kg	6	7.5	11.0	13.5	15.8	21.5	29.5
Weight full	kg	11.8	17.3	28.3	34.6	43	70	110
External diameter	mm	308	308	388	388	468	468	510
Total height	mm	480	584	605	669	655	869	986
Total interior height	mm	405	530	535	612	580	800	933

PRODUCT REFERENCES

References to order	TR7-1	TR11-1	TR21-1	TR26-1	TR35-1	TR60-1	TR100-1
---------------------	-------	--------	--------	--------	--------	--------	---------

MAIN ACCESSORY REFERENCES

A: Roller base	ACC-ALU-29						
B: Fixation kit for the roller base (3 parts)	ACC-ALU-32						
C: Tipping handle	ACC-TR-15	ACC-TR-15	ACC-TR-16	ACC-TR-16	-	-	-
D: DL3 pressurized decanting system	ACC-TR-5						
E: Tipping stand	-	-	ACC-TR-17	ACC-TR-17	ACC-TR-18	-	-
F: Flexible transfer hose (DN10) ²⁾	ACC-FL180180NL-11						
Flexible avec canne de transfert (DN10) ³⁾⁴⁾⁵⁾	F + G1 ou F + G2						
G1: Transfer cane with anti-splash nozzle	ACC-FLTC-2						
G2: Transfer cane without anti-splash nozzle	ACC-FLTC-1						

1) Daily evaporation and static holding time are given for the following conditions: 20°C, 1 013 mb, and vessel is stationary with lid closed.

These are nominal values and may vary according to the history of the vessel and the manufacturing tolerances.

2) The flexible hoses are available in different lengths: 1.5, 2, 3 and 4 meters. If the length = 1.5 m the commercial reference = NL-15.

If the length = 2 m the commercial reference = NL-20. If the length = 3 m the commercial reference = NL-30. If the length = 4 m the commercial reference = NL-40.

