

Rigel S3

Fluorescent Cell Analyzer

Designed to simplify routine laboratory tasks used in CAR-T therapy research.

With multi-functional capabilities, Countstar® Rigel S3 performs a multitude of assays, including those normally done using a flow cytometer. The pre-installed BioApps (assay templates) simplify assays for GFP transfection, cell surface CD marker analysis, and cell cycle status, and allow users to design customized assays for various cell lines. Our user-friendly interface and patented Fixed Focus technology make it easier than ever to phenotypically characterize CAR-T cells.

Features:

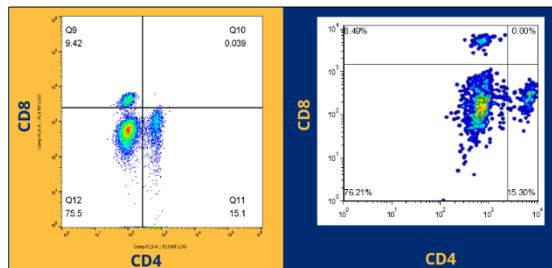
- ✦ Whole blood sample analysis
- ✦ AO/PI and Trypan Blue cell density and viability
- ✦ GFP transfection efficiency
- ✦ Cell surface (CD) marker assay
- ✦ Patented *Fixed Focus* technology
- ✦ cGMP and 21 CFR Part 11 compliant



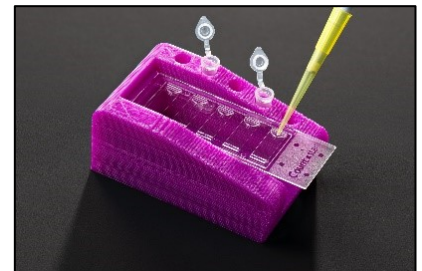
Touch screen controls with easy-to-use BioApps allow multiple assays to be completed with one instrument



CD-marker patterns comparing CD8 vs. CD4. **Left:** flow cytometer. **Right:** Countstar® Rigel S3



5-chamber slides for automated, consecutive analysis of multiple samples



www.countstar.com