

Pipette washer EPS 2D/EPS 3D



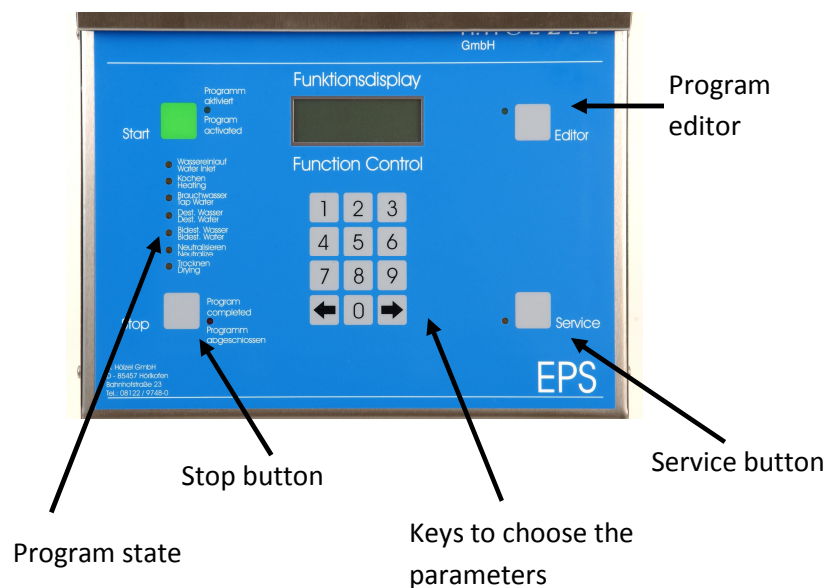
Product description

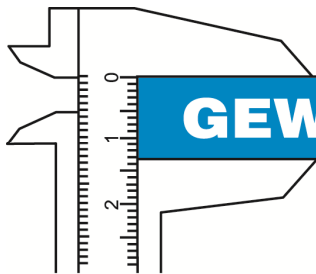
Fully computer controlled pipette washer with automatic dosage of liquid detergent, which allows the user to control the entire washing process. All parameters can be programmed to match the contamination of the pipettes. One fixed and eight flexible programs make an excellent washing result possible even in requirements changing every day. The advanced program editor and a LCD Display with four lines of 20 characters make it easy to use and program the rinser.

- ⊕ nine cleaning programs
- ⊕ operation with two or three (EPS3D) kinds of water
- ⊕ program runs automatically
- ⊕ suitable for all kinds of common glass pipettes
- ⊕ high cleaning capacity
- ⊕ surface considerate process

Washing procedure

1. Place the contaminated pipettes into the rinser by using the basket system
- ↓
2. Choose the washing program and Press the Start button
- ↓
3. Fully automatic program run
- ↓
4. The clean and dry pipettes can be taken out of the machine





Technical information

Connection

Voltage: 230V / 16 A
 Current: 3,0 KW
 Tap water: 3/4"; max. 60°C intake temperature
 *VE-water: 3/4"
 Water pressure: between 0,5 and 6 bar
 Waste water: DN20

Consumption

	low-	high water level
Energy:	4,9 kWh	7 kWh
*VE-Wasser:	max. 90 liter	max. 130 liter
tap water:	max. 180 liter	max. 270 liter
detergent:	0-400 ml	0-400 ml

Temperature range

Cleaning: 30°C or 96°C
 Drying: 130°C

Programs for two kinds of water

Number: 1
 Duration: ca. 8 hours

Capacity max. 9 baskets

weight/material 50 kg / stainless steel

Attachement: 8 kg

Dimensions:

breadth: 325 mm
 depth: 530 mm
 height: 920 mm (device top edge with closed cover plate)
 height: 1230 mm (with open cover plate)



Equipment

6 pcs. baskets 80x80x415 mm
 3 pcs. baskets 80x80x300 mm
 9 pcs. Numbering clamps to mark the baskets
 5 liter liquid purifying agent
 Technical documentation and connection set
 1 pcs. Connection set:
 2x water inlet house
 1x water outlet house
 1x hose bow 90°
 6x hose clamp
 4x hose coupling
 4x seal

Cleaning capacity

Messure pipettes							
Volume	1,0 ml	2,0 ml	5,0 ml	10,0 ml	20,0 ml	50,0 ml	100,0 ml
Per rinser	1305	1080	810	441	324	144	54
Full pipettes							
Volume	2,0 ml	3,0 ml	5,0 ml	10,0 ml	20,0 ml	50,0 ml	100,0 ml
Per rinser	900	576	324	225	144	54	20