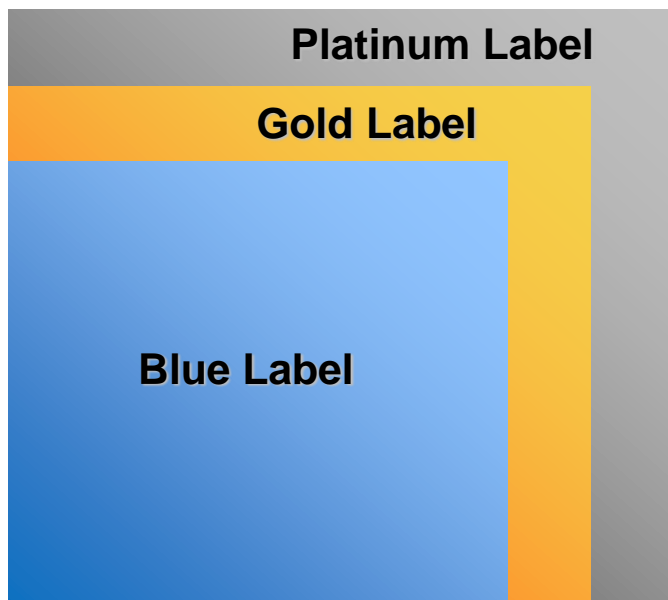


Blue Label Pilot-plant Reactor



Product Line-up



Blue Label

Plug & Play : Ease of Use

**Gold Label
Customization**

Flexible and Easy Upgrades and

Platinum Label

Custom Chemical Engineering Solutions

Two types of stand



Blue Label Pilot-plant Reactor,
Stationary Stand



Blue Label Pilot-plant Reactor,
Fully Functional Stand

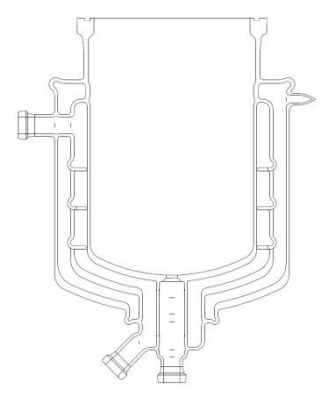


- ! Variety of Vessel Options
- ! Widest Temperature Range in the World
(-120 degree C to 250 degree C)
- ! High quality and Engineering Design
- ! Production Ratios in Line With
- ! Manufacturing Scale
- ! Consistent Shape Ratio
- ! Time & Cost Saving

- ! Maximum Heat Transfer
- ! No Dead Space
- ! Leak-proof Flush Valve
- ! Industrial Design Inlet/Outlet
- ! Complete Package
- ! Compact Footprint
- ! Resource Saving

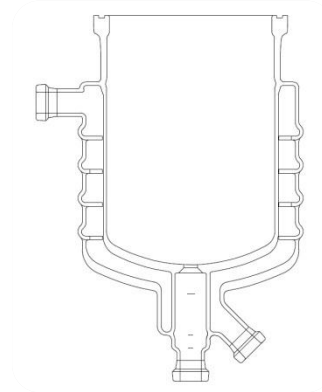
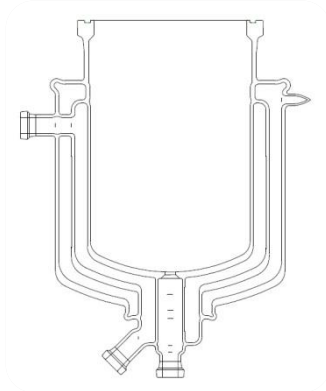
Asynt

Variety of vessel options



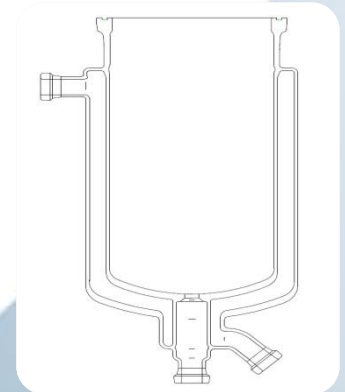
**Triple Wall
with Ring Baffle**

Triple Wall



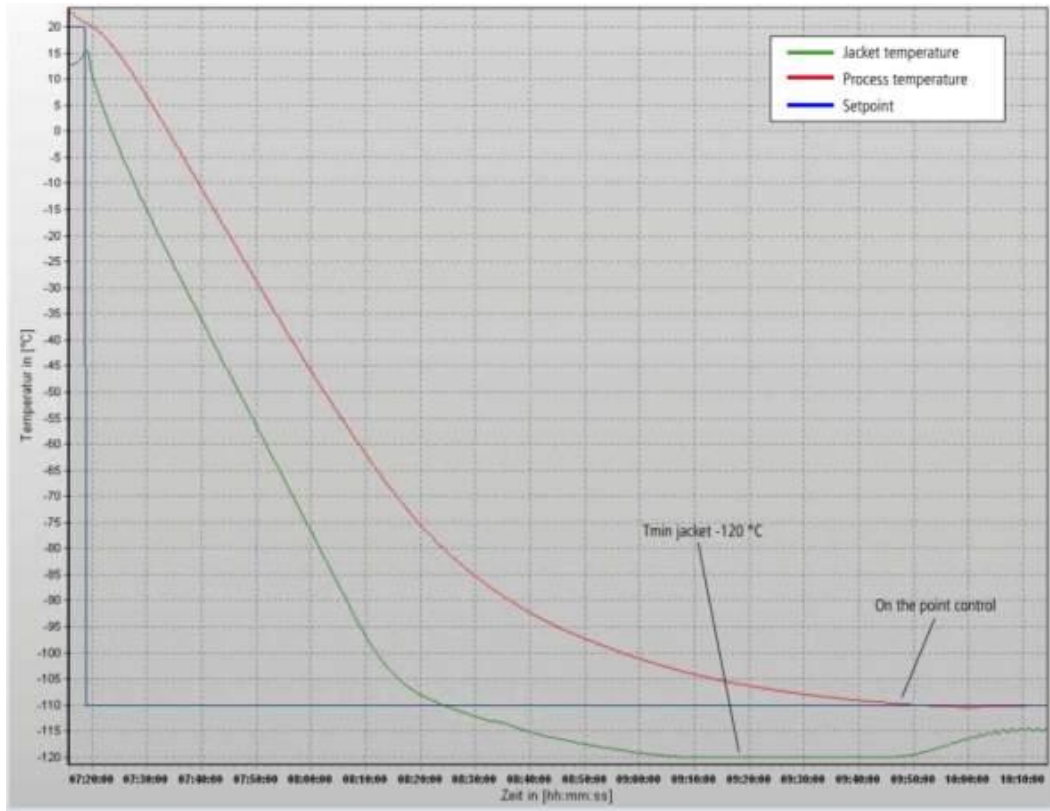
**Double Wall
with Ring Baffle**

Double Wall

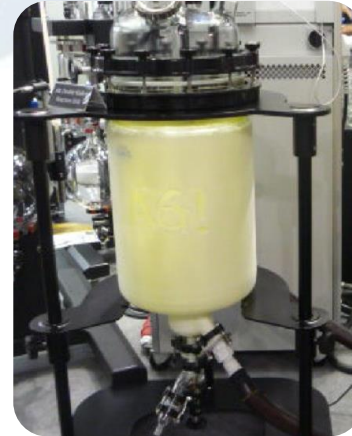


Widest temperature range in the world

(-120°C to 250 °C)



Note. Data from a test conducted by Huber with AGI OL reactor and Huber Unistat 1005w (HTF: Kryothermal S)



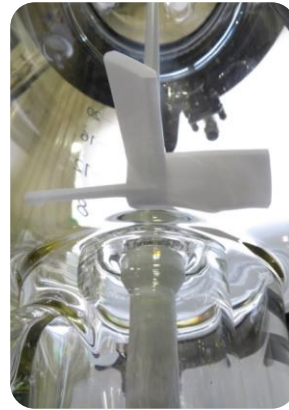
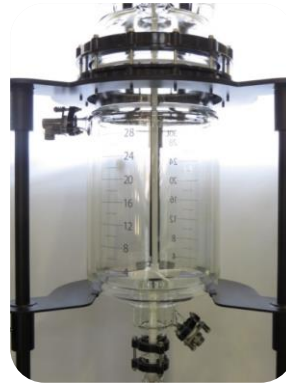
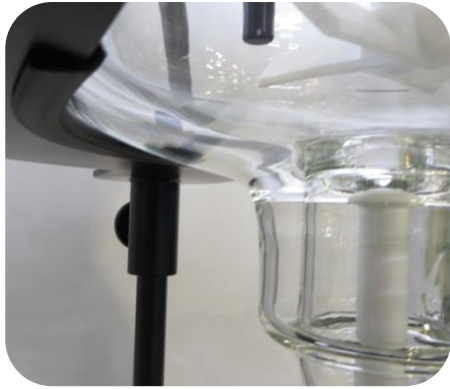
30L Double Wall Reactor



30L Triple Wall Reactor
with Ring Baffle

-120°C ~ +250 °C
ΔT: 60°C (Triple Wall)
ΔT: 110°C (Double Wall)

High quality design & engineering

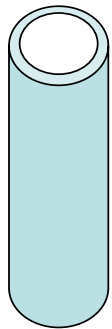


Note.

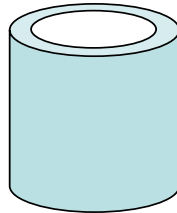
- All glass welded construction
- Wall thickness and pressure is perfected by AG!(with ring baffles only)
- Proprietary Ring Baffle Technology

Production Ratios in line with Manufacturing Scale Consistent Shape Ratio

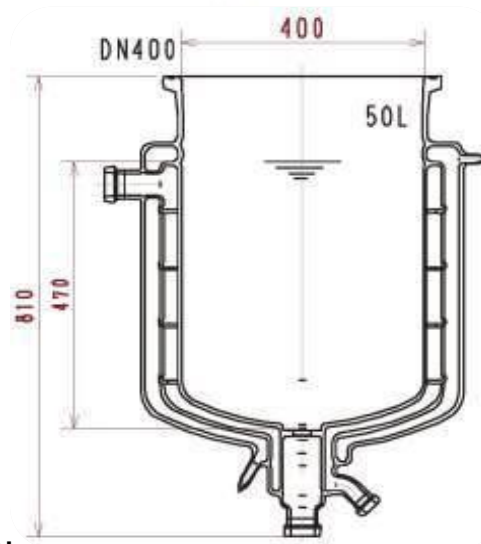
Re-sizing Technique



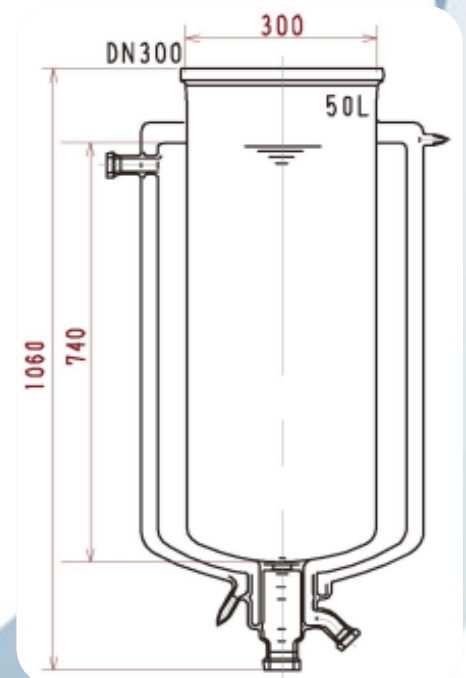
Blow & Compress



AG! 50L



Others 50L



Note.

AG! Develops our Reaction Units with the
Intend of Scaling-up by Emulating ID/Height
Ratio of Larger Production Vessels

Time and cost saving



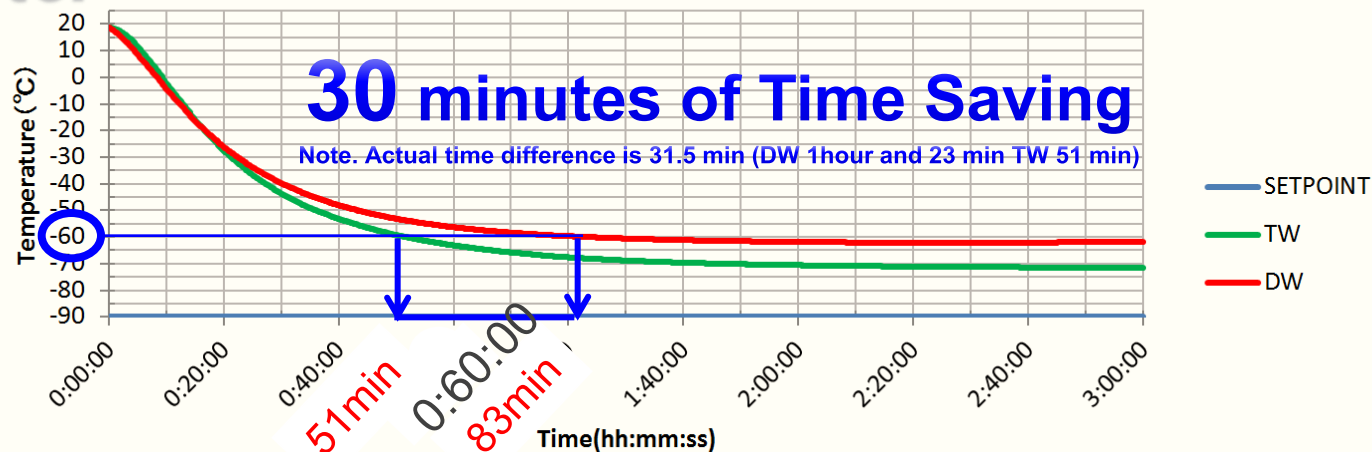
Asynt

Compact

Maximum heat transfer

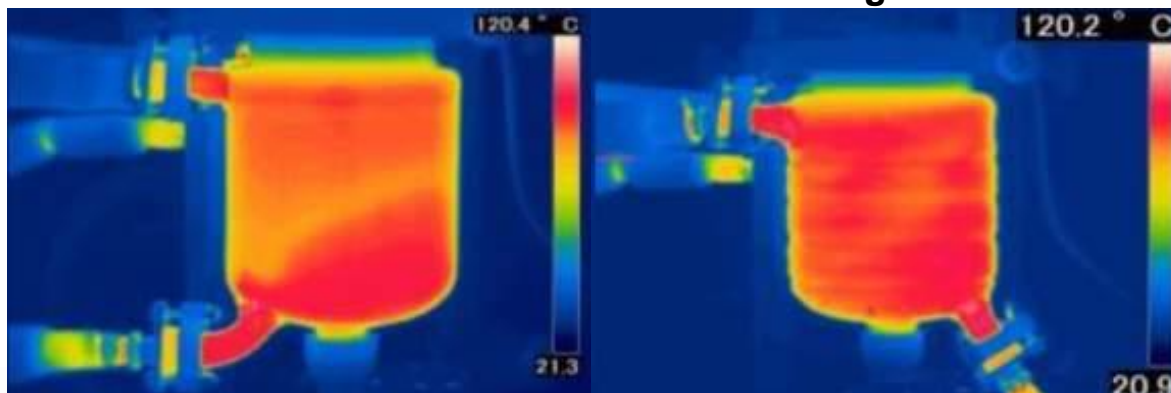
Faster

Process Temperature



Typical Reactor

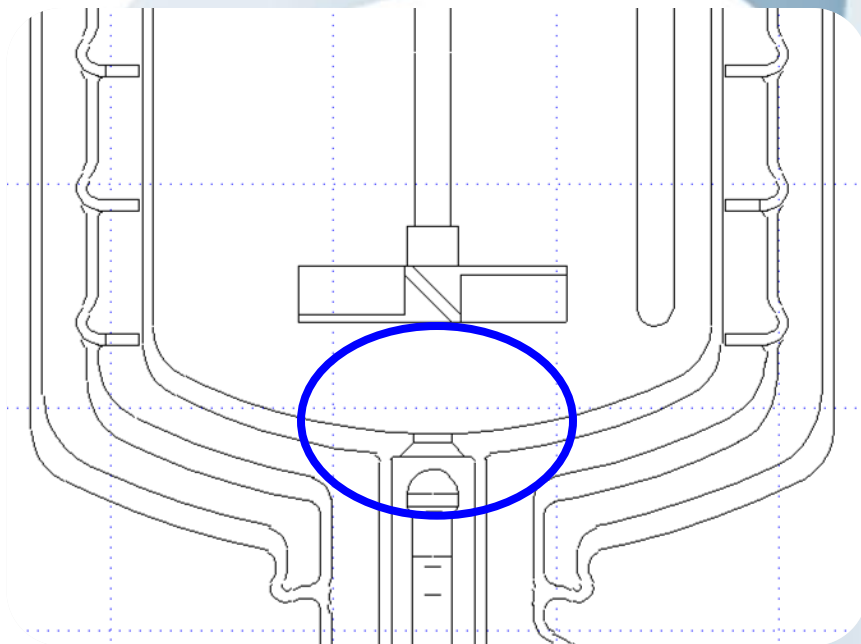
AG! Double Wall
with Ring Baffles



Note. Data from the AG! Test on 1L Double wall and Double wall with Ring Baffles Reactors with LAUDA RP890C (Silicone oil)

Asynt

No dead space



Leak-proof flush valve

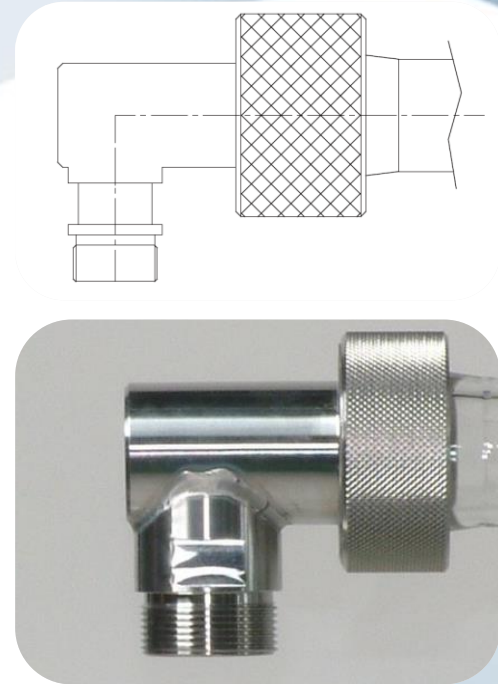


Note.
Pressure Sensitive Spring Loaded
Flush Valve Prevents Leakage

Industrial design inlet/outlet

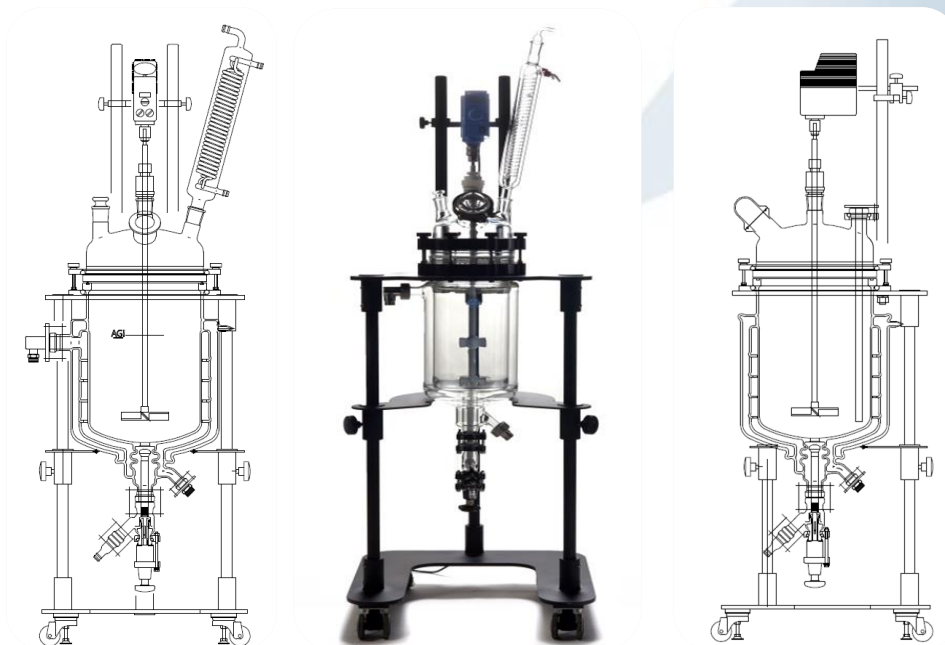


For Triple Wall Reactor Use



For Double Wall Reactor Use

Complete package



Vessel

M 30 for HTF

Flush Valve

PTFE Stir Bearing

Head (Glass Cover)

PTFE Stir Shaft

Condenser

Flanges and Couplings

Thermometer Pocket

Support Structure

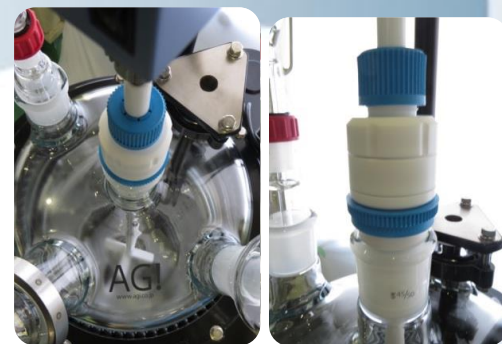
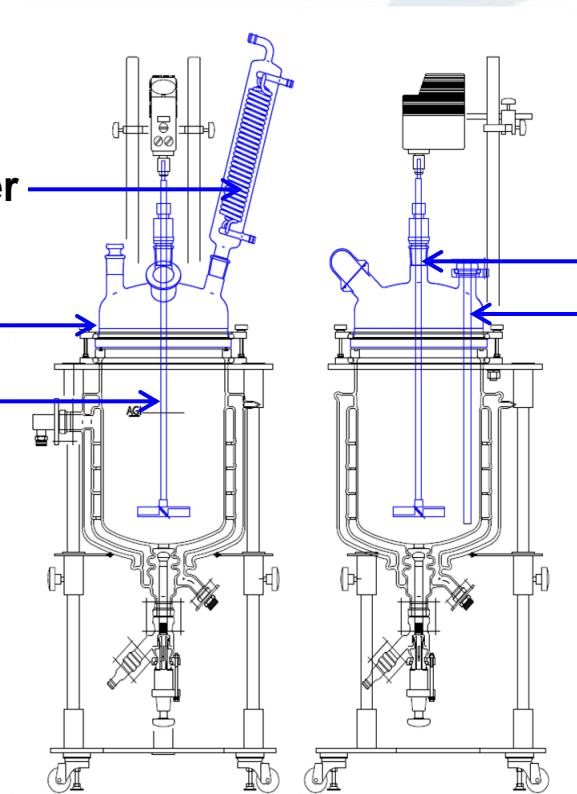
Complete package



Head (Glass Cover)

Stir Shaft

Condenser



PTFE Stir Bearing
Thermometer Pocket

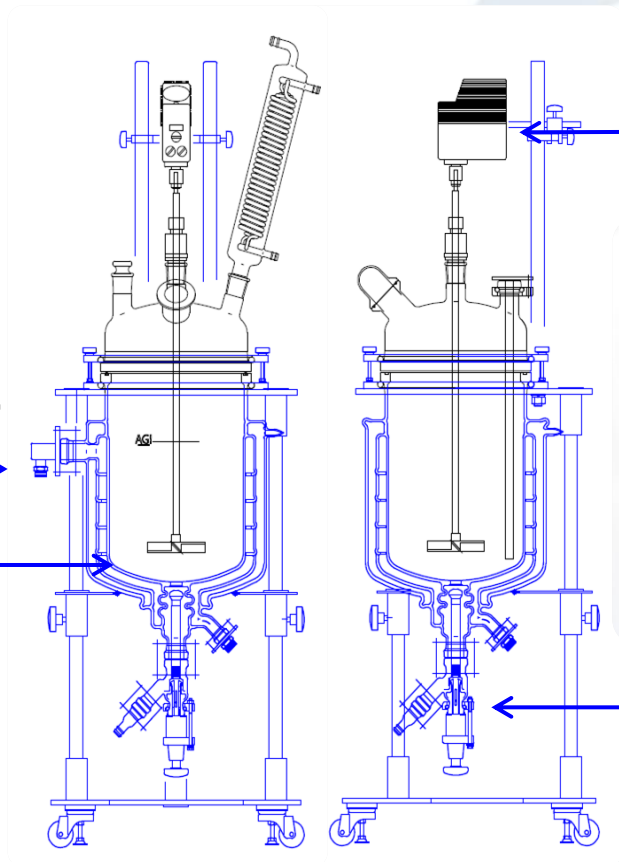


Complete package



M30 for HTF

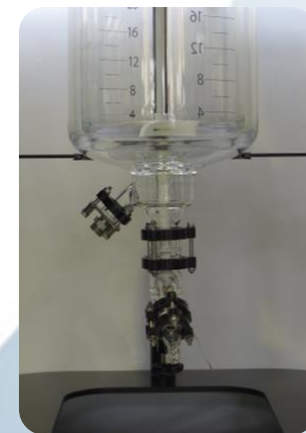
Vessel



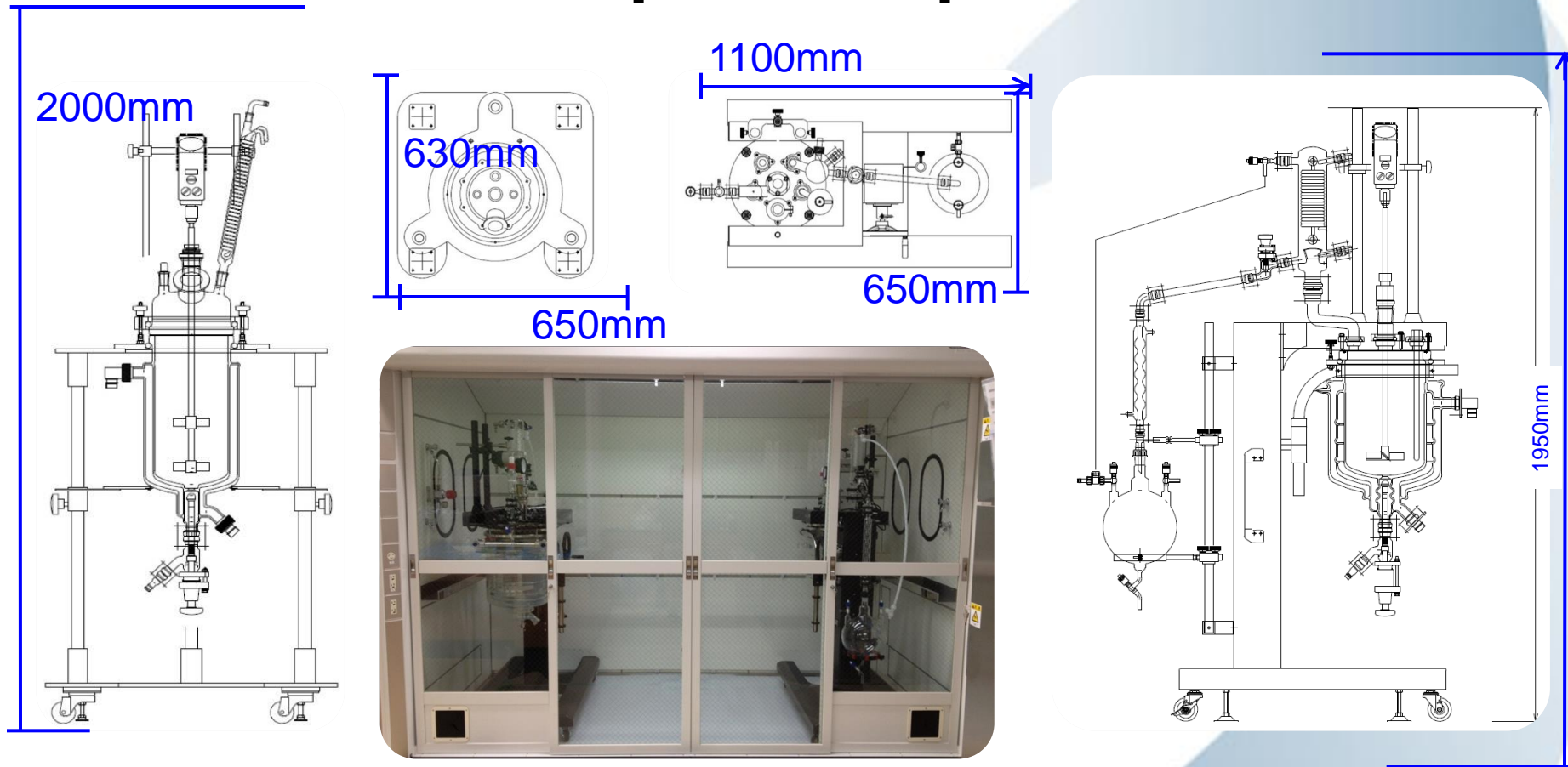
Support Structure



Flush Valve



Compact footprint



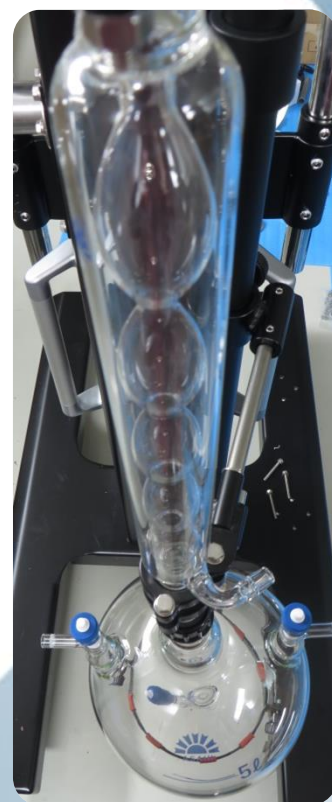
Blue Label Pilot-plant Reactor, Fully Functional Stand



Integrated built-in hand lift



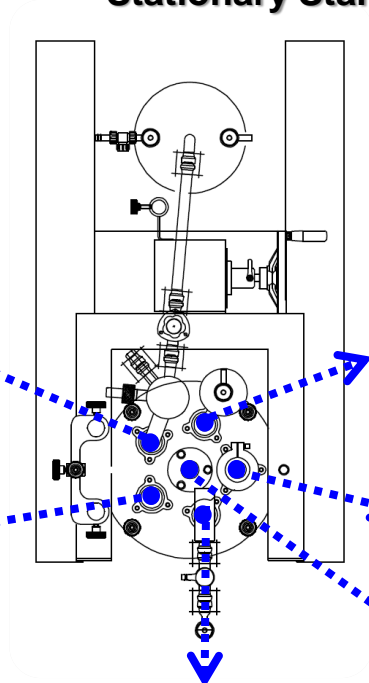
Includes Receiver, Piping, Safety Valve, Pressure Gauge and Reflux Divider



Complete head configuration

Blue Label Pilot-plant Reactor

Stationary Stand



Condenser

Dropping funnel

Spare port

PTFE Mechanical
Seal Bearing

Safety Valve
Pressure Gauge

Thermometer
Pocket

Temperature probe with
PTFE probe holder

PTFE
Mechanical
Seal Bearing

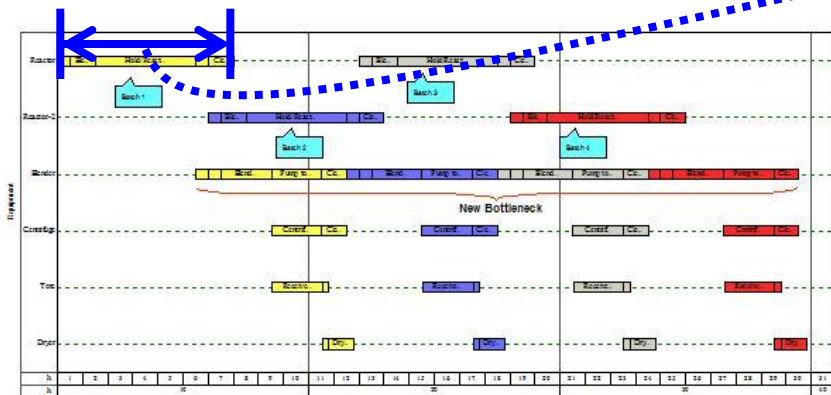
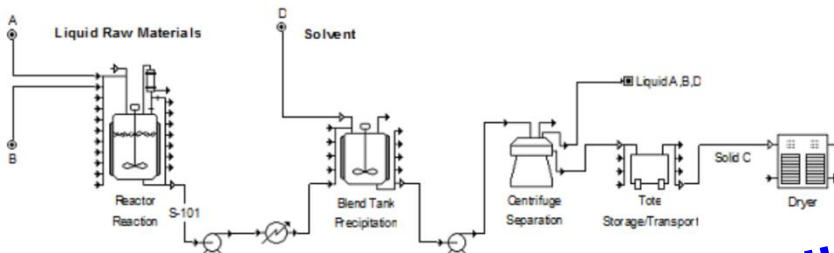
Condenser

Spare port

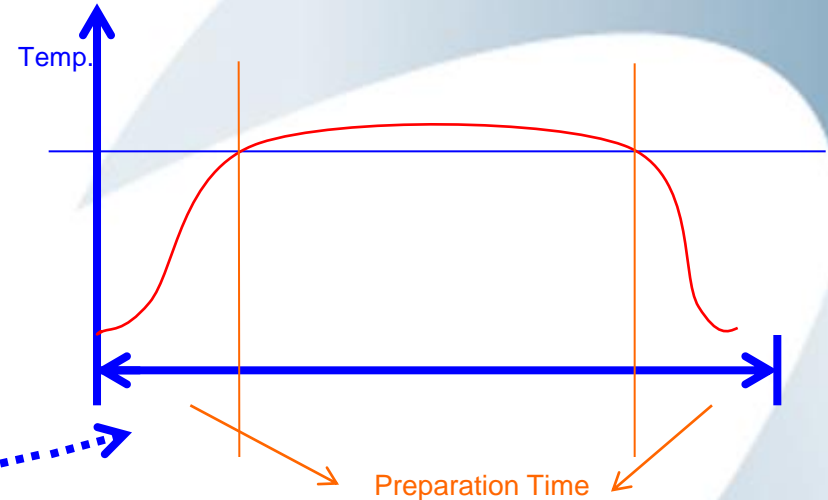
Filling port
for solid/liquid
feed

Blue Label Pilot-plant Reactor Fully Functional Stand

Save resources



Batch Scheduling Example



Longer Preparation Time =

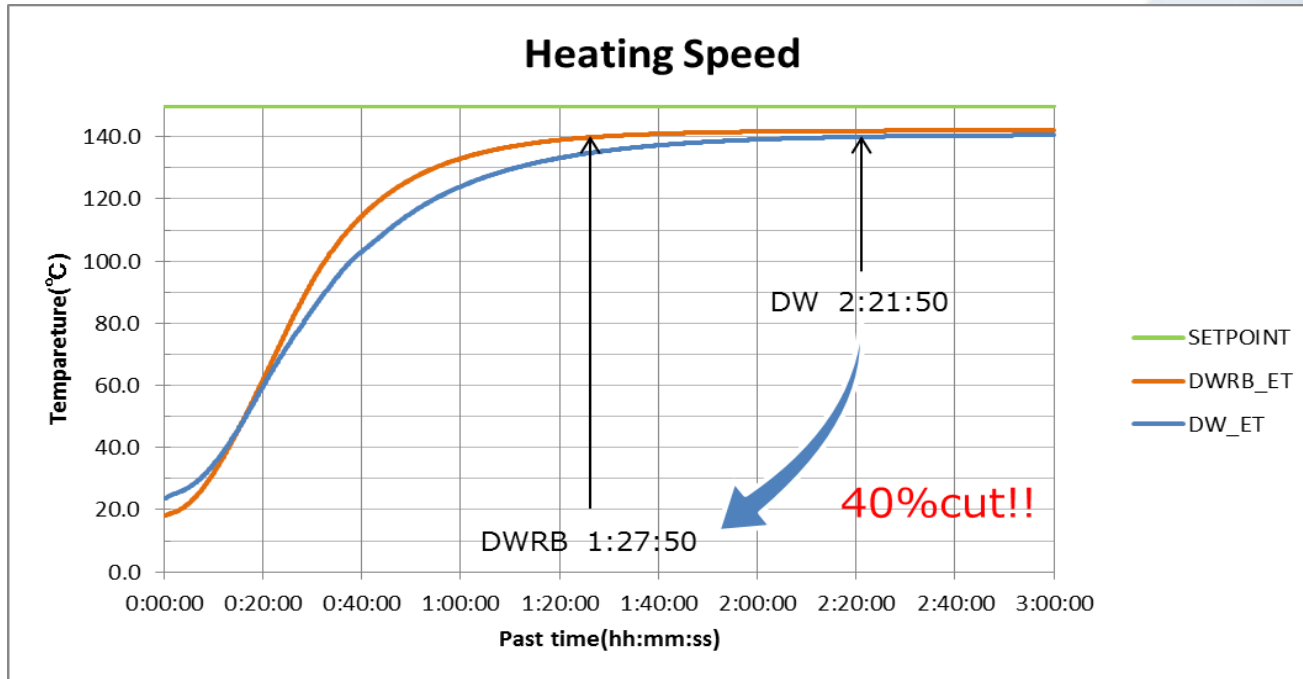
Waste of Time, Human Resources and Utility Expense

Most of all, that much of time loss on preparation equals less product (result).

Our suggested system guarantees less preparation time!

Save resources

AG! only
Glass Made Ring Baffles



Note. Data from the AG! Test on 20L Double wall and Double wall with Ring Baffles Reactors with LAUDA RP890C (Silicone oil)

AG! Ring Baffles can save 40% of your time.
Make the best out of your process with our Ring Baffles.
Do not waste any more time!

Asynt

Any questions?

- If you'd like to find out more then contact sales@asynt.com
- Find us online at www.asynt.com